

DISTRICT

REAL ESTATE ADVISORS

93

WINDSOR ST.
CAMBRIDGE

FOR SALE
OR LEASE



PROPERTY & MARKET HIGHLIGHTS



2,200 SF STREET LEVEL
2,200 SF LOWER LEVEL



RECENTLY RENOVATED
WITH NEW
INFRASTRUCTURE



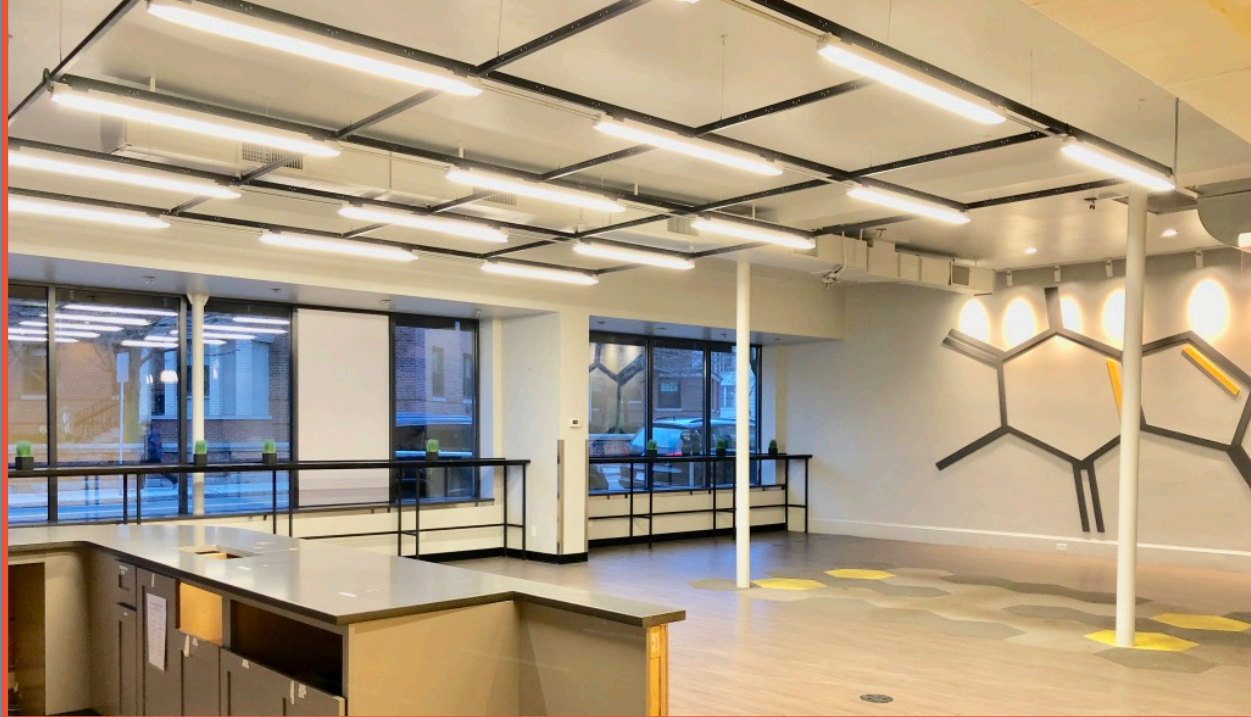
CORNER RETAIL LOCATION
BETWEEN CENTRAL
SQUARE AND KENDALL
SQUARE



TENANCY:
FLOUR – NACO TACO
ROXY'S – OATH PIZZA
AREA FOUR – CRAIGIE ON
MAIN – WHOLEHEART
PROVISIONS



FOUR PARKING SPACES



PROPERTY & MARKET HIGHLIGHTS



ZONING: RES C-1



**LAND AREA:
+/- 3,274 SF
0.08 ACRES**

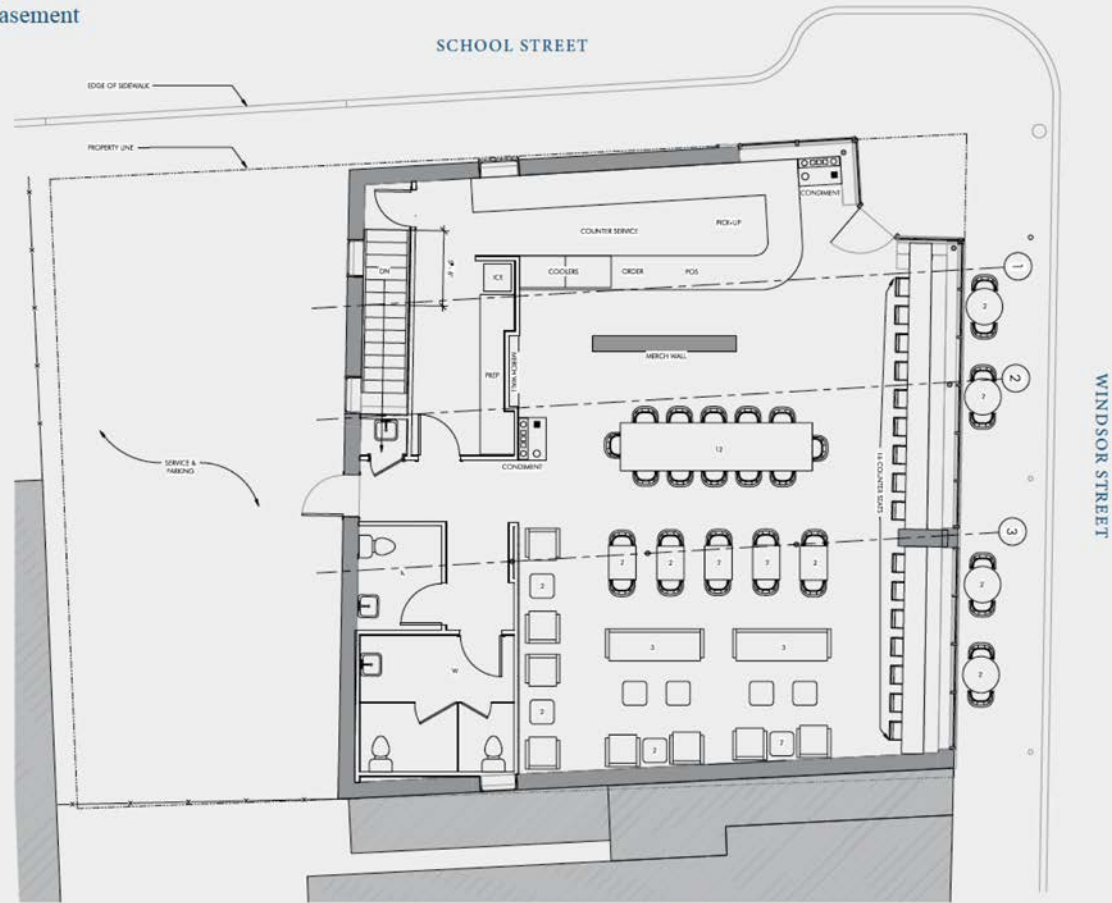


**REAL ESTATE TAXES:
+/- \$9,000 ANNUALLY**



STREET LEVEL

Combined suite 4,400 square feet
2,200 SF First Floor
2,200 SF Basement







CONTACT

CHRISTOPHER MEARN
617-943-2272
CMEARN@DISTRICTADVISORS.COM

HANA MCLAREN
860-391-2017
HMCLAREN@DISTRICTADVISORS.COM



32 Fairfield Street Suite #2 | Boston, MA 02116 | T: (857) 284 7971 | www.districtadvisors.com

This Information has been secured from sources we believe to be reliable, but we make no representations or warranties, expressed or implied, as to the accuracy of the information. References to renderings, square footage, demographics, traffic count or age are approximate. All Parties must verify the information and bears all risk for any inaccuracies.