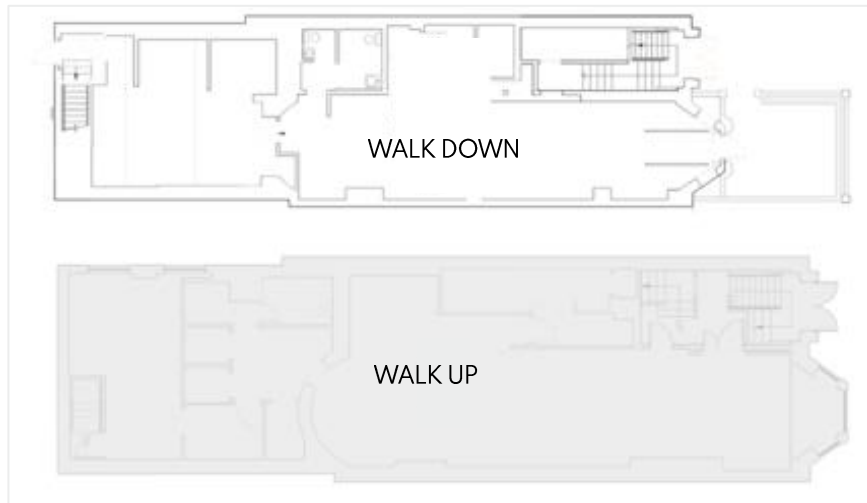




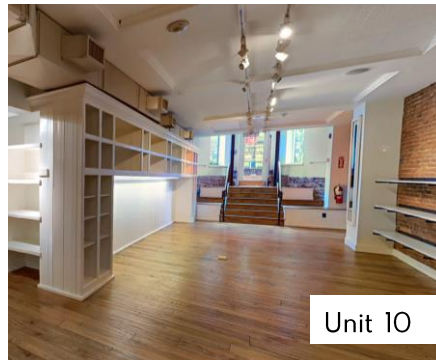
119 NEWBURY STREET

BACK BAY | BOSTON, MA

FLOOR PLAN



INTERIOR



LOCATION

Newbury St. between
Dartmouth St. and Clarendon St.

SIZE

Unit 10 - Walk Down 1,984 SF
Unit 100 - Walk Up approx. 1,960 SF

FORMERLY

Paddywax

NEIGHBORS

FRAME, Bluemercury, Jenni Kayne, Levain Bakery, Alice + Olivia, Nike, Dr. Martens, Vuori, Anthropologie, lululemon, ZARA, State & Liberty, Allbirds, Bonobos, LUSH, Marine Layer, Marimekko, illesteva, INTERMIX, Longchamp, Trend, Lilly Pulitzer, Credo, Pure Glow, CAVA, Sweetgreen, Ben & Jerry's, J.P. Licks, Blue Bottle Coffee, The Capital Burger.

ASKING RENT

Upon request

TERM

Pop - Up, Short and Long Term

POSSESSION

Arranged

COMMENTS

- Retail space in the heart of Newbury Street
- 15' of Frontage
- Daytime population: 161,858
- Strong mix of local, regional and tourist customers.
- Close proximity to all major transportation.

For Inquiries Please Contact:



Matthew S. Krell	Mkrell@amp-solutions.com
Fritz M. Kemerling	Fkemerling@amp-solutions.com
Joshua A. Lewin	Jlewin@amp-solutions.com
Josh Kaidanow	Jkaidanow@amp-solutions.com



Christopher Mearn	Cmearn@districtadvisors.com
Rich Lobkowitz	Rich@districtadvisors.com
Beck Dangler	Beck@districtadvisors.com
Hana McLaren	Hana@districtadvisors.com