



「 119 NEWBURY STREET
BACK BAY | BOSTON, MA 」

119 NEWBURY STREET

BACK BAY | BOSTON, MA

FLOOR PLAN



LOCATION

Newbury St. between Dartmouth St. and Clarendon St.

SIZE

Unit 10 – Walk Down	1,984 SF
Unit 100 – Walk Up	1,960 SF

FORMERLY

Paddywax

ASKING RENT

Upon request

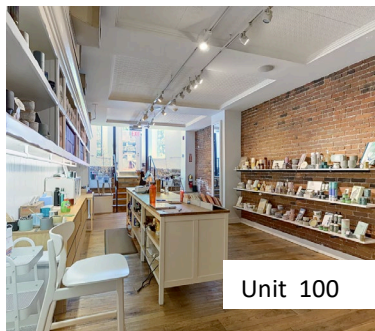
TERM

Long Term

POSSESSION

Arranged

INTERIOR



Unit 100



Unit 10

NEIGHBORS

FRAME, Bluemercury, Jenni Kayne, Levain Bakery, Alice + Olivia, Nike, Dr. Martens, Vuori, Anthropologie, lululemon, ZARA, State & Liberty, Allbirds, Bonobos, LUSH, Marine Layer, Marimekko, illesteva, INTERMIX, Longchamp, Trend, Lilly Pulitzer, Credo, Pure Glow, CAVA, Sweetgreen, Ben & Jerry's, J.P. Licks, Blue Bottle Coffee, The Capital Burger.

COMMENTS

- Retail space in the heart of Newbury Street
- 15' of Frontage
- Daytime population: 161,858
- Strong mix of local, regional and tourist customers.
- Close proximity to all major transportation.

119 NEWBURY STREET

BACK BAY | BOSTON, MA

FOR INQUIRIES, PLEASE CONTACT

AMP
S

Matthew S. Krell

Mkrell@amp-solutions.com

Dan Bodner

Dbodner@amp-solutions.com

Joshua A. Lewin

Jlewin@amp-solutions.com

DISTRICT
REAL ESTATE ADVISORS

Christopher Mearn

Cmearn@districtadvisors.com

Rich Lobkowitz

Rich@districtadvisors.com

Beck Dangler

Beck@districtadvisors.com

ALVAREZ & MARSAL
PROPERTY SOLUTIONS

AMP-SOLUTIONS.COM

This information has been secured from sources we believe to be reliable, but we make no representations as to the accuracy of the information. References to square footage are approximate. Tenant must verify the information and bears all risk for any inaccuracies.