

# 156 NEWBURY STREET

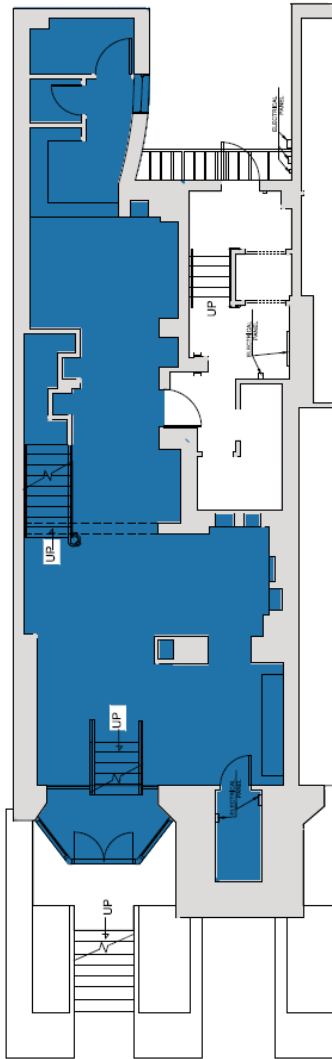
BACK BAY | BOSTON, MA



# 156 NEWBURY STREET

BACK BAY | BOSTON, MA

## FLOOR PLAN



## LOCATION

Between Dartmouth St.  
and Exeter St.

## SIZE

Unit 20 - Walk Down      1,287 SF

## CURRENTLY

Benefit Cosmetics

## NEIGHBORS

FRAME, Bluemercury, Jenni Kayne, Levain Bakery, Alice + Olivia, Nike, Dr. Martens, Vuori, Anthropologie, lululemon, ZARA, State & Liberty, Allbirds, Bonobos, LUSH, Marine Layer, Marimekko, illesteva, INTERMIX, Longchamp, Trend, Lilly Pulitzer, Credo, Pure Glow, CAVA, Sweetgreen, Ben & Jerry's, J.P. Licks, Blue Bottle Coffee, The Capital Burger.

## ASKING RENT

Upon request

## TERM

Pop - Up, Short and Long Term

## POSSESSION

09/01/2022

## COMMENTS

- More than 16 million SF of office immediately surrounding.
- Two blocks from all major transportation.
- Median Age: 31 years old
- Average HH Income: \$144,180
- 12 Million visitors per annum
- 72% Educational Attainment
- Walk score: 98

# For Inquiries Please Contact:



Matthew S. Krell	Mkrell@amp-solutions.com
Fritz M. Kemerling	Fkemerling@amp-solutions.com
Joshua A. Lewin	Jlewin@amp-solutions.com
Josh Kaidanow	Jkaidanow@amp-solutions.com



Christopher Mearn	Cmearn@districtadvisors.com
Rich Lobkowitz	Rich@districtadvisors.com
Beck Dangler	Beck@districtadvisors.com
Hana McLaren	Hana@districtadvisors.com