



AM  
PS



## 160 NEWBURY STREET

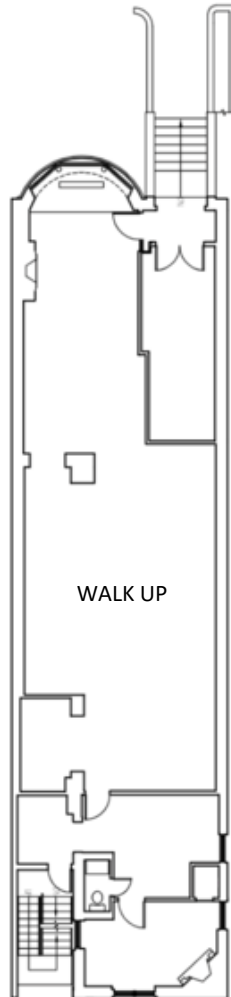
BACK BAY | BOSTON, MA



# 160 NEWBURY STREET

BACK BAY | BOSTON, MA

## FLOOR PLAN



## LOCATION

Newbury St. between Dartmouth St. and Exeter St.

## SIZE

Unit 100 – Walk Up  
2,005 SF

## FORMERLY

Sitka Home

## NEIGHBORS

FRAME, Bluemercury, Jenni Kayne, Levain Bakery, Alice + Olivia, Nike, Dr. Martens, Vuori, Anthropologie, lululemon, ZARA, State & Liberty, Allbirds, Bonobos, LUSH, Marine Layer, Marimekko, illesteva, INTERMIX, Longchamp, Trend, Lilly Pulitzer, Credo, Pure Glow, CAVA, Sweetgreen, Ben & Jerry's, J.P. Licks, Blue Bottle Coffee, The Capital Burger.

## ASKING RENT

Upon request

## TERM

Long Term

## POSSESSION

Arranged

## COMMENTS

- Prime Newbury Street Retail Space
- 14'10" of Frontage
- 79% of the population ranges from ages 18-64
- Strong mix of local, regional and tourist customers.
- Close proximity to all major transportation.



# 160 NEWBURY STREET

BACK BAY | BOSTON, MA

FOR INQUIRIES, PLEASE CONTACT



Matthew S. Krell

Dan Bodner

Joshua A. Lewin

Mkrell@amp-solutions.com

Dbodner@amp-solutions.com

Jlewin@amp-solutions.com



Christopher Mearn

Rich Lobkowitz

Beck Dangler

Cmearn@districtadvisors.com

Rich@districtadvisors.com

Beck@districtadvisors.com



**AMP-SOLUTIONS.COM**

This information has been secured from sources we believe to be reliable, but we make no representations as to the accuracy of the information. References to square footage are approximate. Tenant must verify the information and bears all risk for any inaccuracies.