



AM  
PS

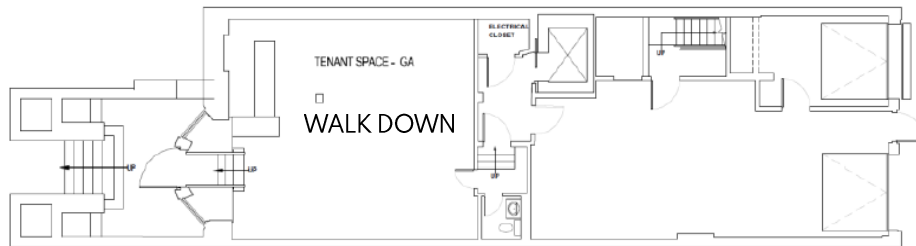
# 172 NEWBURY STREET

BACK BAY | BOSTON, MA

# 172 NEWBURY STREET

BACK BAY | BOSTON, MA

## FLOOR PLANS



## LOCATION

Newbury St. between  
Dartmouth St. and Exeter St.

## ASKING RENT

Upon request

## SIZE

Unit 10 - Walk Down 836 SF

## TERM

Pop-Up, Short and Long Term

## CURRENTLY

Walk down: Aesop

## POSSESSION

Arranged

## INTERIOR



## NEIGHBORS

FRAME, Bluemercury, Jenni Kayne, Levain Bakery, Alice + Olivia, Nike, Dr. Martens, Vuori, Anthropologie, lululemon, ZARA, State & Liberty, Allbirds, Bonobos, LUSH, Marine Layer, Marimekko, illesteva, INTERMIX, Longchamp, Trend, Lilly Pulitzer, Credo, Pure Glow, CAVA, Sweetgreen, Ben & Jerry's, J.P. Licks, Blue Bottle Coffee, The Capital Burger.

## COMMENTS

- Prime Retail Space on historic Newbury Street .
- More than 16 million SF of office immediately surrounding.
- Median Age: 31 years old
- Average HH Income: \$144,180
- 12 Million visitors per annum
- 72% Educational Attainment
- Walk score: 98



Matthew S. Krell  
Fritz M. Kemerling  
Joshua A. Lewin

Mkrell@amp-solutions.com  
Fkemerling@amp-solutions.com  
Jlewin@amp-solutions.com

212.328.8740  
212.461.5971  
212.461.5979

[AMP-SOLUTIONS.COM](http://AMP-SOLUTIONS.COM)

This information has been secured from sources we believe to be reliable, but we make no representations as to the accuracy of the information. References to square footage are approximate. Tenant must verify the information and bears all risk for any inaccuracies.