



AM
PS

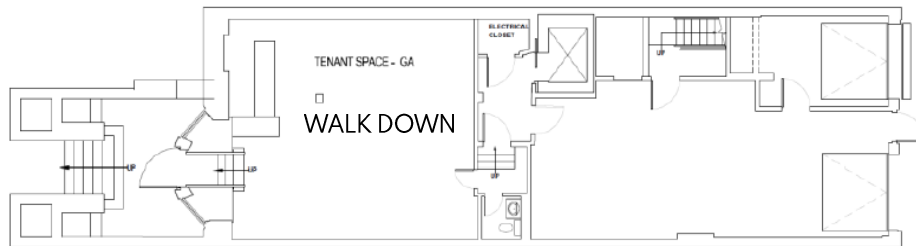
172 NEWBURY STREET

BACK BAY | BOSTON, MA

172 NEWBURY STREET

BACK BAY | BOSTON, MA

FLOOR PLANS



LOCATION

Newbury St. between
Dartmouth St. and Exeter St.

ASKING RENT

Upon request

SIZE

Unit 10 - Walk Down 836 SF

TERM

Long Term

FORMERLY

Walk down: Aesop

POSSESSION

Arranged

INTERIOR



NEIGHBORS

FRAME, Bluemercury, Jenni Kayne, Levain Bakery, Alice + Olivia, Nike, Dr. Martens, Vuori, Anthropologie, lululemon, ZARA, State & Liberty, Allbirds, Bonobos, LUSH, Marine Layer, Marimekko, illesteva, INTERMIX, Longchamp, Trend, Lilly Pulitzer, Credo, Pure Glow, CAVA, Sweetgreen, Ben & Jerry's, J.P. Licks, Blue Bottle Coffee, The Capital Burger.

COMMENTS

- Prime Retail Space on historic Newbury Street .
- More than 16 million SF of office immediately surrounding.
- Median Age: 31 years old
- Average HH Income: \$144,180
- 12 Million visitors per annum
- 72% Educational Attainment
- Walk score: 98



Matthew S. Krell
Fritz M. Kemerling
Joshua A. Lewin

Mkrell@amp-solutions.com
Fkemerling@amp-solutions.com
Jlewin@amp-solutions.com

212.328.8537
212.461.5971
212.461.5979

AMP-SOLUTIONS.COM

This information has been secured from sources we believe to be reliable, but we make no representations as to the accuracy of the information. References to square footage are approximate. Tenant must verify the information and bears all risk for any inaccuracies.

For Inquiries Please Contact:



Matthew S. Krell	Mkrell@amp-solutions.com
Fritz M. Kemerling	Fkemerling@amp-solutions.com
Joshua A. Lewin	Jlewin@amp-solutions.com
Josh Kaidanow	Jkaidanow@amp-solutions.com



DISTRICT
REAL ESTATE ADVISORS

Christopher Mearn	Cmearn@districtadvisors.com
Rich Lobkowitz	Rich@districtadvisors.com
Beck Dangler	Beck@districtadvisors.com