



AM
PS

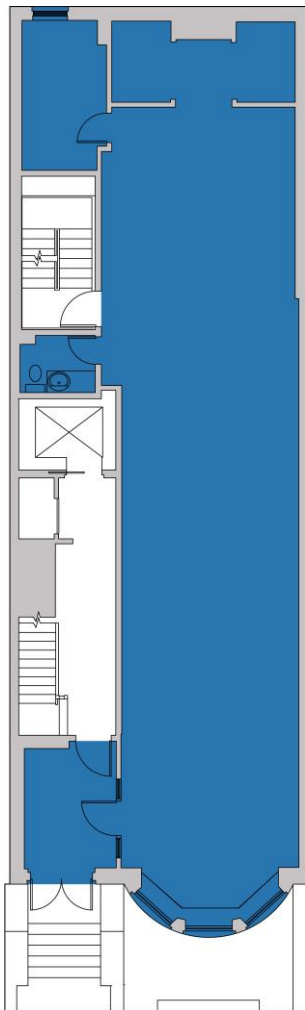
172 NEWBURY STREET

BACK BAY | BOSTON, MA

172 NEWBURY STREET

BACK BAY | BOSTON, MA

FLOOR PLAN



LOCATION

Newbury St. between Dartmouth St.
and Exeter St.

SIZE

Unit 10 - Walk Up
1,512 SF

FORMERLY

Up West

NEIGHBORS

Away, Bluemercury, Nike, ALO, Zara,
Google, Lululemon, Levain Bakery,
Vuori, Princess Polly (coming soon),
Ba&sh, Rails, Cotopaxi (coming soon),
LUSH, Bond Vet, Blue Bottle Coffee,
Ganni (coming soon), Credo, Allbirds,
Parachute, Catbird, Veronica Beard

ASKING RENT

Upon request

TERM

Long Term

POSSESSION

Immediate

COMMENTS

- Prime Retail Space on historic Newbury Street.
- More than 16 million SF of office immediately surrounding.
- Median Age: 31 years old
- Average HH Income: \$144,180
- 12 Million visitors per annum
- 72% Educational Attainment
- Walk score: 98

172 NEWBURY STREET

BACK BAY | BOSTON, MA

FOR INQUIRIES, PLEASE CONTACT

AM
PS

Matthew S. Krell

Dan Bodner

Max Swerdloff

Mkrell@amp-solutions.com

Dbodner@amp-solutions.com

mswerdloff@amp-solutions.com

DISTRICT
REAL ESTATE ADVISORS

Rich Lobkowicz

Beck Dangler

Rich@districtadvisors.com

Beck@districtadvisors.com

ALVAREZ & MARSAL
PROPERTY SOLUTIONS

AMPSRE.COM

This information has been secured from sources we believe to be reliable, but we make no representations as to the accuracy of the information. References to square footage are approximate. Tenant must verify the information and bears all risk for any inaccuracies.