



AM
PS

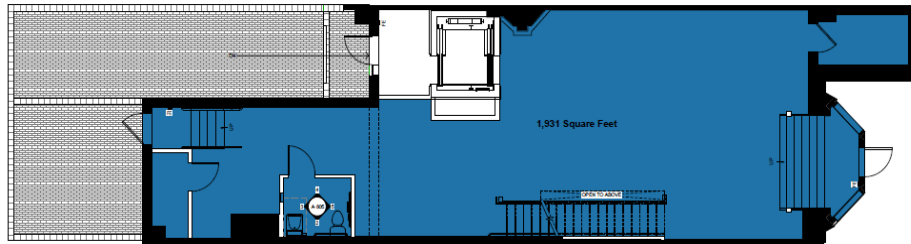
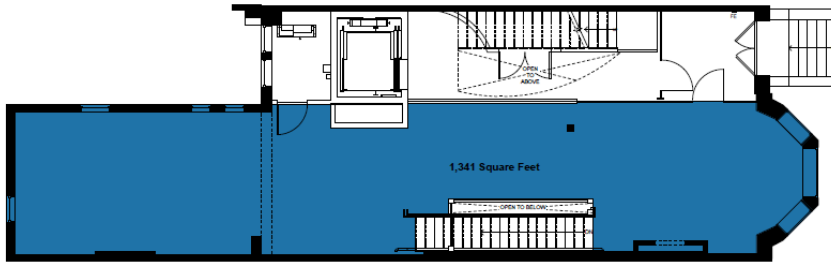
179 NEWBURY STREET

BACK BAY | BOSTON, MA

179 NEWBURY STREET

BACK BAY | BOSTON, MA

FLOOR PLAN



LOCATION

Newbury St. between
Dartmouth St. and Exeter St.

ASKING RENT

Upon request

SIZE

Walk Down 1,341 SF
Garden Level 1,931 SF

TERM

Long Term

CURRENTLY

Vacant

POSSESSION

Immediate

NEIGHBORS

FRAME, Bluemercury, Jenni Kayne, Levain Bakery, Alice + Olivia, Nike, Dr. Martens, Vuori, Anthropologie, lululemon, ZARA, State & Liberty, Allbirds, Bonobos, LUSH, Marine Layer, Marimekko, illesteva, INTERMIX, Longchamp, Trend, Lilly Pulitzer, Credo, Pure Glow, CAVA, Sweetgreen, Ben & Jerry's, J.P. Licks, Blue Bottle Coffee, The Capital Burger.

COMMENTS

- More than 16 million SF of office immediately surrounding.
- Two blocks from all major transportation.
- Average HH Income: \$144,180
- 12 Million visitors per annum
- 72% Educational Attainment
- Walk score: 98
- Daytime Population: 161,858
- 79% of the population ranges from ages 18-64

For Inquiries Please Contact:



Matthew S. Krell	Mkrell@amp-solutions.com
Fritz M. Kemerling	Fkemerling@amp-solutions.com
Joshua A. Lewin	Jlewin@amp-solutions.com
Josh Kaidanow	Jkaidanow@amp-solutions.com



DISTRICT
REAL ESTATE ADVISORS

Christopher Mearn	Cmearn@districtadvisors.com
Rich Lobkowitz	Rich@districtadvisors.com
Beck Dangler	Beck@districtadvisors.com