



「AM
PS」

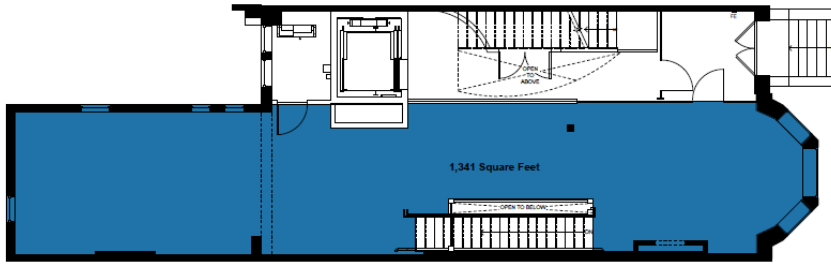
「179 NEWBURY STREET

BACK BAY | BOSTON, MA 」

179 NEWBURY STREET

BACK BAY | BOSTON, MA

FLOOR PLAN



LOCATION

Newbury St. between
Dartmouth St. and Exeter St.

ASKING RENT

Upon request

SIZE

Walk Down 1,341 SF
Garden Level 1,931 SF

TERM

Pop - Up, Short and Long Term

CURRENTLY

Vacant

POSSESSION

Immediate

NEIGHBORS

FRAME, Bluemercury, Jenni Kayne, Levain Bakery, Alice + Olivia, Nike, Dr. Martens, Vuori, Anthropologie, lululemon, ZARA, State & Liberty, Allbirds, Bonobos, LUSH, Marine Layer, Marimekko, illesteva, INTERMIX, Longchamp, Trend, Lilly Pulitzer, Credo, Pure Glow, CAVA, Sweetgreen, Ben & Jerry's, J.P. Licks, Blue Bottle Coffee, The Capital Burger.

COMMENTS

- More than 16 million SF of office immediately surrounding.
- Two blocks from all major transportation.
- Average HH Income: \$144,180
- 12 Million visitors per annum
- 72% Educational Attainment
- Walk score: 98
- Daytime Population: 161,858
- 79% of the population ranges from ages 18-64



Matthew S. Krell
Fritz M. Kemerling
Joshua A. Lewin

Mkrell@amp-solutions.com
Fkemerling@amp-solutions.com
Jlewin@amp-solutions.com

212.328.8740
212.461.5971
212.461.5979

AMP-SOLUTIONS.COM

This information has been secured from sources we believe to be reliable, but we make no representations as to the accuracy of the information. References to square footage are approximate. Tenant must verify the information and bears all risk for any inaccuracies.