

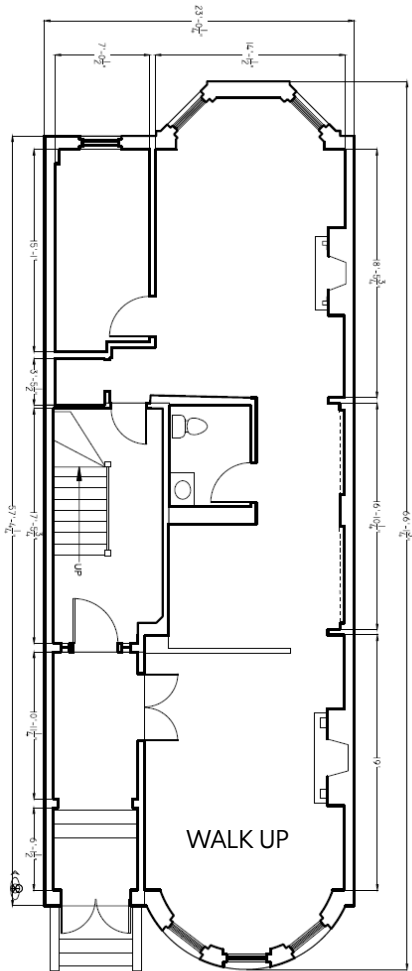




# 220 NEWBURY STREET

BACK BAY | BOSTON, MA

## FLOOR PLAN



## LOCATION

Newbury St. between  
Exeter St. & Fairfield St.

## ASKING RENT

Upon request

## SIZE

Unit 100 - Walk Up 1,172 SF

## TERM

Long Term

## CURRENTLY

The Sill

## POSSESSION

Arranged

## NEIGHBORS

Zara, John Fluevog, Lululemon,  
Nike, Shake Shack, Anthropologie,  
Allbirds, Ted Baker, Gorjana,  
Rothy's, Bang & Olufsen, Hastens,  
Skin MD, Credo, Serafina, Intermix,  
Suit Supply, Illesteva, Levain,  
Alice & Olivia, CVS, Revolve

## COMMENTS

- Prime Newbury Street Retail Space
- 14'10" of Frontage
- 79% of the population ranges from ages 18-64
- Strong mix of local, regional and tourist customers.
- Close proximity to all major transportation.

# For Inquiries Please Contact:



|                    |                              |
|--------------------|------------------------------|
| Matthew S. Krell   | Mkrell@amp-solutions.com     |
| Fritz M. Kemerling | Fkemerling@amp-solutions.com |
| Joshua A. Lewin    | Jlewin@amp-solutions.com     |
| Josh Kaidanow      | Jkaidanow@amp-solutions.com  |



**DISTRICT**  
REAL ESTATE ADVISORS

|                   |                             |
|-------------------|-----------------------------|
| Christopher Mearn | Cmearn@districtadvisors.com |
| Rich Lobkowicz    | Rich@districtadvisors.com   |
| Beck Dangler      | Beck@districtadvisors.com   |