

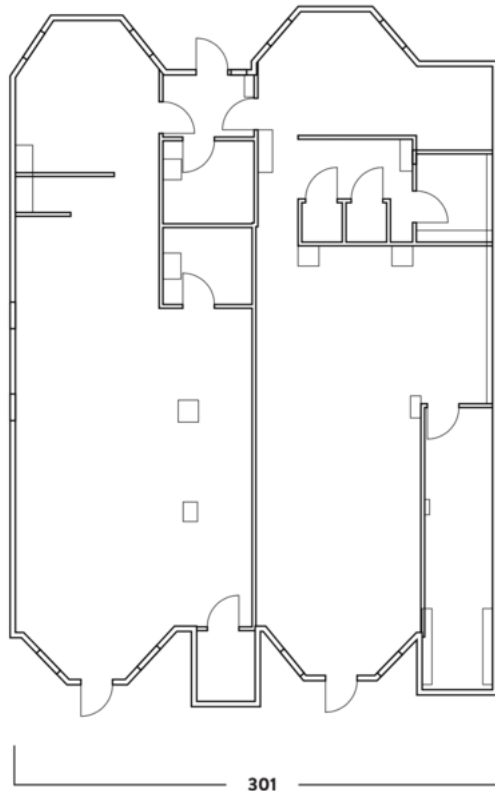
301 NEWBURY STREET
BACK BAY | BOSTON, MA



301 NEWBURY STREET

BACK BAY | BOSTON, MA

FLOOR PLAN



LOCATION

Newbury St. between
Gloucester St. and Hereford St.

ASKING RENT

Upon request

SIZE

Walk Up	1,073 SF
Walk Down	1,397 SF

TERM

Pop - Up, Short and Long Term

CURRENTLY

Walk Up - Fred Perry
Walk Down - Hempist (Month to
Month)

POSSESSION

Arranged

NEIGHBORS

FRAME, Bluemercury, Jenni
Kayne, Levain Bakery, Alice +
Olivia, Nike, Dr. Martens, Vuori,
Anthropologie, lululemon, ZARA,
State & Liberty, Allbirds,
Bonobos, LUSH, Marine Layer,
Marimekko, illesteva, INTERMIX,
Longchamp, Trend, Lilly Pulitzer,
Credo, Pure Glow, CAVA,
Sweetgreen, Ben & Jerry's, J.P.
Licks, Blue Bottle Coffee, The
Capital Burger.

COMMENTS

- 17 feet of frontage on Newbury.
- More than 16 million SF of office immediately surrounding.
- Two blocks from MBTA Green Line Copley Station and Hynes Convention Center T Stops.
- Median Age: 31 years old
- 72% Educational Attainment

For Inquiries Please Contact:



Matthew S. Krell	Mkrell@amp-solutions.com
Fritz M. Kemerling	Fkemerling@amp-solutions.com
Joshua A. Lewin	Jlewin@amp-solutions.com
Josh Kaidanow	Jkaidanow@amp-solutions.com



Christopher Mearn	Cmearn@districtadvisors.com
Rich Lobkowitz	Rich@districtadvisors.com
Beck Dangler	Beck@districtadvisors.com
Hana McLaren	Hana@districtadvisors.com