



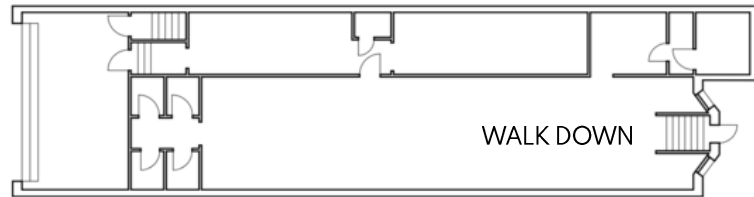
81 NEWBURY STREET

BACK BAY | BOSTON, MA

81 NEWBURY STREET

BACK BAY | BOSTON, MA

GROUND FLOOR



LOCATION

Newbury St. between
Berkley St. and Clarendon St.

ASKING RENT

Upon request

SIZE

Unit 10 - Walk Down 2,180 SF

TERM

Long Term

FORMERLY

John Fluevog

POSSESSION

Immediate

INTERIOR



NEIGHBORS

FRAME, Bluemercury, Jenni Kayne, Levain Bakery, Alice + Olivia, Nike, Dr. Martens, Vuori, Anthropologie, lululemon, ZARA, State & Liberty, Allbirds, Bonobos, LUSH, Marine Layer, Marimekko, illesteva, INTERMIX, Longchamp, Trend, Lilly Pulitzer, Credo, Pure Glow, CAVA, Sweetgreen, Ben & Jerry's, J.P. Licks, Blue Bottle Coffee, The Capital Burger.

COMMENTS

- Beautifully built out space in move in condition.
- 15 feet of frontage on Newbury
- \$1,263,851 median home value.
- Strong mix of local, regional and tourist customers.
- Close proximity to all major transportation.
- Daytime population: 161,858

For Inquiries Please Contact:



Matthew S. Krell	Mkrell@amp-solutions.com
Fritz M. Kemerling	Fkemerling@amp-solutions.com
Joshua A. Lewin	Jlewin@amp-solutions.com
Josh Kaidanow	Jkaidanow@amp-solutions.com



DISTRICT
REAL ESTATE ADVISORS

Christopher Mearn	Cmearn@districtadvisors.com
Rich Lobkowitz	Rich@districtadvisors.com
Beck Dangler	Beck@districtadvisors.com