

129 NEWBURY STREET

BACK BAY | BOSTON, MA



LASH & LAMOUR

LASH & LAMOUR

ARDEN LTD
GALLERY

ARDEN LTD
GALLERY

THE RUG
COMPANY

Donnelly
+Co.

Donnelly
+Co.

THE RUG
COMPANY

THE RUG
COMPANY

posman books

pb

posman books

pb
EXIT ONLY

posman books

Wacoal

The Right Bra Is A
WACOAL BRA

LOCATION

129 Newbury St. between
Dartmouth St. and Clarendon St.

TERM

Long Term

ASKING RENT

Upon request

CURRENTLY

The Rug Company

SIZE

Unit 110 – Walk Up: 1,504 Square Feet

POSSESSION

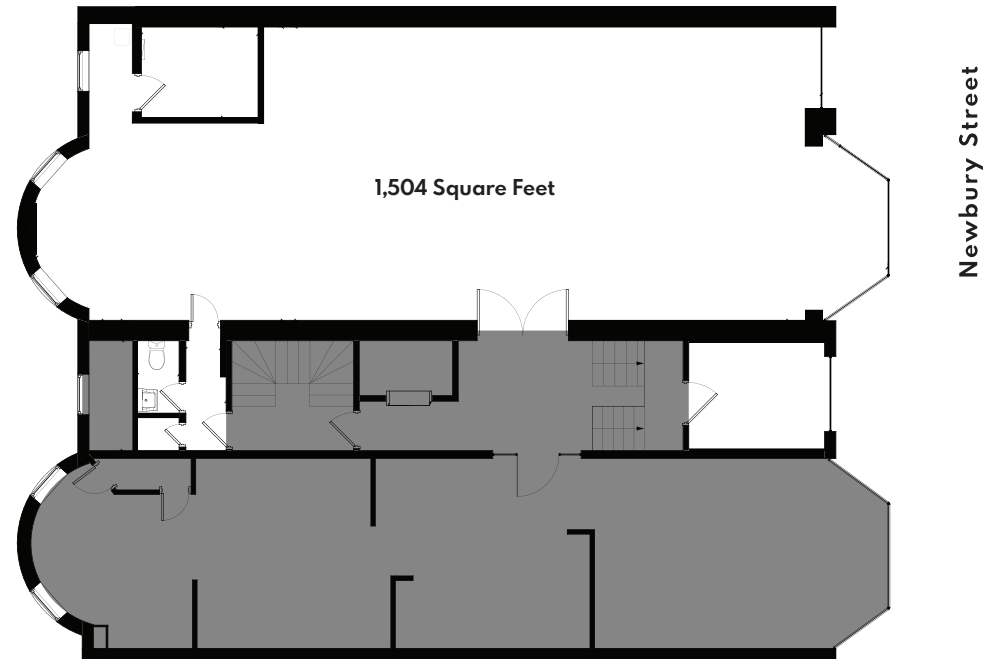
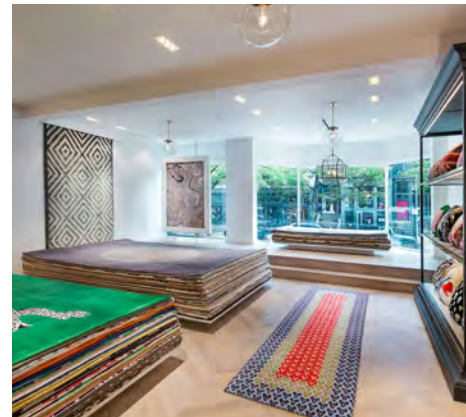
Arranged

NEIGHBORS

FRAME, Bluemercury, Jenni Kayne, Levain Bakery, Alice + Olivia, Nike, Dr. Martens, Vuori, Anthropologie, lululemon, ZARA, State & Liberty, Allbirds, Bonobos, LUSH, Marine Layer, Marimekko, illesteva, INTERMIX, Longchamp, Trend, Lilly Pulitzer, Credo, Pure Glow, CAVA, Sweetgreen, Ben & Jerry's, J.P. Licks, Blue Bottle Coffee, The Capital Burger.

COMMENTS

- Retail space in the heart of Newbury Street
- 34' of frontage
- Daytime population: 161.858
- Strong mix of local, regional and tourist customers
- Close proximity to all major transportation

FLOOR PLAN**INTERIOR**

FOR INQUIRIES, PLEASE CONTACT

AMPS

MATTHEW S. KRELL

mkrell@ampsre.com

DANIEL BODNER

dbodner@ampsre.com

MAX SWERDLOFF

mswerdloff@ampsre.com

LIBBY MILLER

lmiller@ampsre.com



BECK DANGLER

beck@districtadvisors.com

